

# Accessories - Measuring Wheels

## Measuring Wheel Application Guide Recommended Use For Measuring Wheels

### Knurled Faced

Coarse Fabric Cloth Tape Rough Wood  
Rubber Carpet Foam  
Insulation

### Rubber Insert

Fine Fabric Paper Cable  
Hard Plastic Film Foil  
Metal (crease-free)

### 80 Urethane Faced

Soft Materials  
Smooth Materials

## Temperature Specifications

### Rubber Faced

-40° F to +275° F

### Urethane Faced

-40° F to +155° F

The above recommendations are only guidelines.  
Performance may vary depending on your application.  
Contact Customer Service for specification assistance.



A Photograph Example of our Wheel Selections

## Features

Measuring wheels are a very cost-effective way to use rotary encoders to measure linear motion such as cut to length applications. Measuring wheels are also useful when it is inconvenient to mount the encoder directly onto the motion device. It is common to have one or two measuring wheels mounted on an encoder shaft. The two most important factors in selecting the best measuring wheel for a given application are the circumference and the surface material. The surface material must be chosen to give optimal traction without unduly compromising wear, while the circumference should be selected to give the best accuracy within the mounting constraints available.

BEPC offers two types of measuring wheels, the first type, Faced Measuring Wheels, has a wide contact surface with a variety of faced coatings (Knurled, Urethane), one of which will be suitable for nearly every specialised application. The second, Rubber Tyre Measuring Wheels uses a replaceable rubber insert or "Tyre" that is easier to set up and maintain and fits most general purpose requirements.

### 6mm Bore

### 10mm Bore

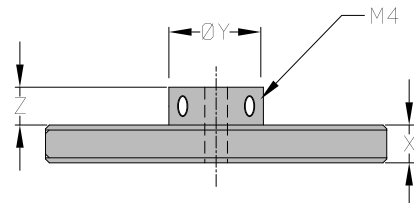
Wheel Type	Circumference	Order Code	Wheel Type	Circumference	Order Code
Rubber Tyre	200mm Circumference	MWB2RU-06	Rubber Tyre	200mm Circumference	MWB2RU-10
Rubber Tyre	300mm Circumference	MWB3RU-06	Rubber Tyre	300mm Circumference	MWB3RU-10
Rubber Tyre	400mm Circumference	MWB4RU-06	Rubber Tyre	400mm Circumference	MWB4RU-10
Rubber Tyre	500mm Circumference	MWB5RU-06	Rubber Tyre	500mm Circumference	MWB5RU-10
Rubber Tyre	6" Circumference	MWB06RU-06	Rubber Tyre	6" Circumference	MWB06RU-10
Rubber Tyre	12" Circumference	MWB12RU-06	Rubber Tyre	12" Circumference	MWB12RU-10
Rubber Tyre	333.3mm Circumference	MWB33RU-06	Rubber Tyre	333.3mm Circumference	MWB33RU-10
Knurled Aluminium	200mm Circumference	MWB2KN-06	Knurled Aluminium	200mm Circumference	MWB2KN-10
Knurled Aluminium	300mm Circumference	MWB3KN-06	Knurled Aluminium	300mm Circumference	MWB3KN-10
Knurled Aluminium	400mm Circumference	MWB4KN-06	Knurled Aluminium	400mm Circumference	MWB4KN-10
Knurled Aluminium	500mm Circumference	MWB5KN-06	Knurled Aluminium	500mm Circumference	MWB5KN-10
Knurled Aluminium	6" Circumference	MWB06KN-06	Knurled Aluminium	6" Circumference	MWB06KN-10
Knurled Aluminium	12" Circumference	MWB12KN-06	Knurled Aluminium	12" Circumference	MWB12KN-10
Knurled Aluminium	333.3mm Circumference	MWB33KN-06	Knurled Aluminium	333.3mm Circumference	MWB33KN-10

We also stock other sizes & types of wheels, and can customise bore sizes.  
Please call the sales office for Price and delivery.

Urethane Wheels - 0.250" Bore		
Wheel Type	Circumference	Order Code
80 Urethane	200mm Circumference	161399
80 Urethane	6" Circumference	161360

## Typical "MWB" Dimensions

BECo "MWB" specification wheels share the following dimensions with the exception of Bore Size and Circumference.



Y = 25mm (All "MWB" Wheels)  
Z = 10mm (400mm & Below), 9mm (500mm)  
X = 10mm (400mm & Below), 20mm (500mm)  
Fixings = 2 X M4 Screws @ 90° Apart

### Urethane Wheels (161399 & 161360)

X = 6.35mm

There is no protruding spigot (Z) on these wheels - 6.35mm is the total width.

For non-standard wheels & other information please contact sales.