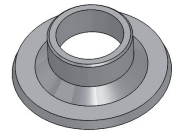


TB-535: Model 30M Using the Installation Centering & Gapping Tool

The majority of applications can have the centering and gapping features designed into an adapter between the device it is being mounted to and the Model 30M (this is the preferred solution). See *TB-533: Model 30M Installation with a Motor Adapter*.



Centering & Gapping Tool
BEPC Part #176615

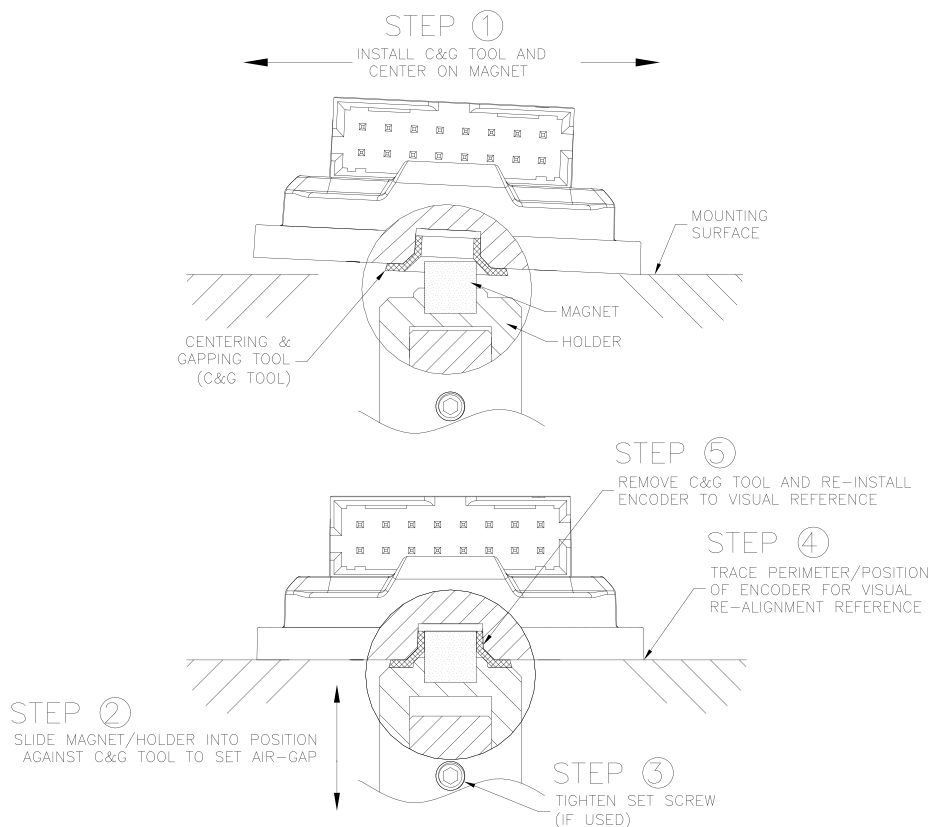
Use the *Installation Centering & Gapping Tool* **ONLY** in the following situations:

- If there are no bosses or pilots available on the motor or mounting surface to center the encoder relative to the shaft and magnet.

And/Or

- If a 2.2mm tall* reference feature above the mounting surface or a jig is not available.

*This dimension establishes the correct nominal air-gap of 0.5mm.



NOTE: Removal of the Installation Centering and Gapping Tool (Step 5) is critical for proper operation of the 30M Encoder Module.