

BEPC has the encoder solution for your harsh duty application

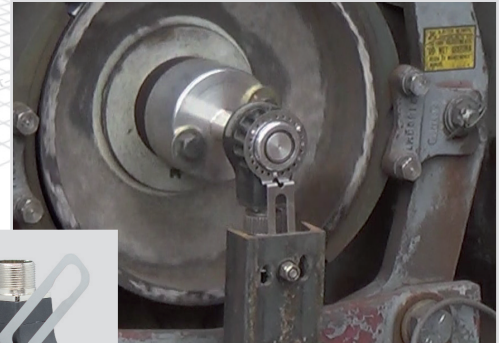
With BEPC's selection of Harsh Duty Encoders, you'll find the right encoder for your application.

When you're operating in harsh industrial environments, your encoder faces tough conditions:

- High levels of moisture/humidity
- Chemical washdowns
- Industrial cleaners
- Caustic chemicals or acids
- Corrosive airborne agents, such as salt

Make sure you have the right encoder spec'd for your harsh environment. The right housing, parts, and IP rating will prolong your encoder's life, reduce downtime, and ensure you get reliable feedback every time. BEPC's selection of harsh duty encoders feature various options:

- IP66, IP67 and even IP69K sealing options
- Housings made of 316 stainless steel
- Special corrosion-resistant powder coating on aluminum housings
- Housings made from corrosion-resistant nylon composites
- Heavy-duty bearings
- Stainless steel shaft collar and mounting hardware
- Corrosion resistant glands/cables
- Mechanically isolated internal encoders



A Model 25T with an FJ Flex Mount Arm mounted on a motor shaft (inspection panel removed). In its harsh outdoor environment at a lumber mill, the dust-tight IP66 seal also protects the encoder from outdoor moisture.



A Model 30M installed in a timber harvester.

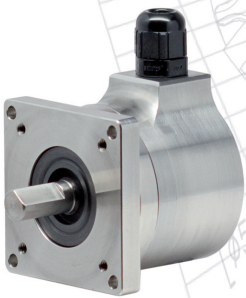


Need a solution for your harshest industrial application?

Stainless Steel Encoders If you need an encoder that's reliable in the presence of moisture or corrosive or caustic agents, check out EBPC's 800 Series. With housings made of 316 stainless steel, bearings rated for loads up to 80 lbs axial/radial, and IP67 sealing, EPC's stainless steel encoders will give you reliable feedback in the harshest industrial applications.

802S

- Industry standard Size 20 (2" diameter) stainless steel package
- Flange and servo mounting
- Up to 30,000 PPR



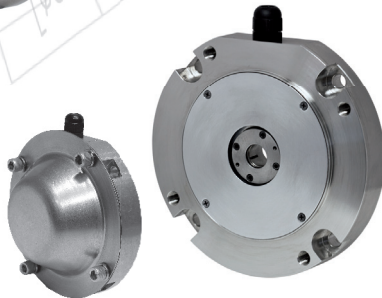
858S

- Industry standard Size 58 (58mm diameter) stainless steel package
- Up to 30,000 PPR
- 100° C operating temperature available



865T

- Fits NEMA Size 56C thru 184C motor faces (4.5" AK)
- Slim profile
- Incorporates Opto-ASIC technology
- Resolutions to 4096 PPR



The Model 25T/H features the largest thru-bore available in a 63.5mm encoder, mounting directly on shafts as large as 1.125" (28 mm). This industrial-strength encoder is perfect for fast revving motors. The injection molded housing, made from BEPC's custom blend of nylon composites, is grooved with "cooling fins" and can take the extreme heat of the motion control industry. With sealing up to IP66 available, rugged, flexible mounting options, and a corrosion-resistant option – with corrosion-resistant gland/cable and stainless steel parts and mounting hardware – the Model 25T/H can perform in demanding industrial environments.

- 63/5mm Opto-ASIC encoder with a low profile (50.8mm)
- Resolutions to 10,000 PPR
- Frequencies to 1 MHz
- Versatile flexible mounting options
- Corrosion-resistant option
- RoHS compliant



The Model 30M is a compact, magnetic incremental encoder module with advanced magnetic sensing and signal processing technology. Featuring commutation channels, several output types, and two supply voltage options, the Model 30M can be configured for a wide range of industrial, commercial and consumer feedback applications. With a non-contact magnetic sensor and optional sealing up to IP69K, the Model 30M can be applied in environments where dirt, dust and liquids are present.

- Large air gap and tolerance to misalignment
- Up to 1024 PPR (4096 PPR with quadrature counting)
- Optional 2, 4 or 8 pole commutation
- Sealing options to IP69K
- Temperature range -40° to 120° C