



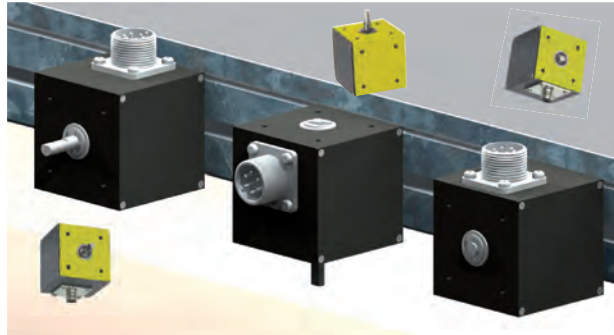
Cube Solutions

www.encoder.couk / +44(0)1978 262100

A cube solution for every application

Get the BEPC Advantage with the original Cube Encoders

- Compatible with most:
 - ✓ Programmable controllers
 - ✓ Electronic counters
 - ✓ Motion controllers
 - ✓ Motor drives
- Single channel, quadrature, and timed pulse
- Versatile housing styles, from Standard to Ultra-Heavy Duty
- Resolutions to 10,000 PPR
- Single and double shaft options
- Unidirectional or bidirectional output
- Single chip design
- Many connector options
- Opto-ASIC Accuracy
- Shaft sizes from 1/4" to 5/8"
- Sealing to IP65
- High Temp Options
- End mount, bottom mount or shaft mount puts the shaft and connector location in perfect alignment for an easy installation.



Cube Housing Options

Standard Housing



- The Original Cube Encoder
- Single or Double Ended Shafts
- Tapped Mounting Holes on 3 Sides
- Multiple Shaft Sizes
- 2.25" (57.1mm) x 2.25" (57.1mm) Cube
- Thousands of Configurations

Industrial Housing



- More Robust Standard Cube
- 2.5" (63.5mm) x 2.5" (63.5mm) Cube
- Wall Thickness 4.7mm"
- IP65 Shaft Seal
- Single or Double Ended Shafts
- Tapped Mounting Holes on 3 Sides

Heavy Duty Housings

All Heavy Duty housings provide mechanical isolation via a flexible coupling to an internally mounted Cube encoder. Extra thick 6.35mm walls provide additional protection from the outside environment.

HD12



- Heavy Duty
- Popular Housing Style
- Sealing to IP65
- 18.1 Kg Radial Load
- 13.6 Kg Axial Load

HD10



- ULTRA Heavy Duty
- Sealing to IP65
- 43 Kg Radial Load
- 27.2 Kg Axial Load
- 0.500" or 0.625" shaft diameter
- Stainless Steel Shaft

Endless Applications

"Cut-to-Length" is the most common Cube application. You'll see Cube Encoders in the paper, textile, metal, plastic, and wood/timber industries.



Cube Accessories



The LCA converts a Cube encoder into a linear measurement encoder

Double and single pivot mounting brackets mount measuring wheels to Cube



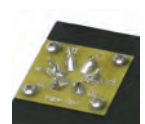
6-pin, 7-pin, and 10-pin MS



5-pin, and 8-pin M12



Gland Nut Cable



Solder or Screw Terminal

Get the British Encoder Products Advantage

Who Is Encoder Products Company?

British Encoder Products Company is the European Division of EPC. Established in 1969, Encoder Products Company (EPC) is a global manufacturer of Accu-Coder™ brand encoders, and the largest privately held encoder manufacturer in the US. Operating from the belief that every customer deserves a quality product, EPC is known for building reliable, durable encoders that will last you for years. With superior customer service, expert support, and short lead times – even overnight, with expedite options – discover the Accu-Coder™ Advantage for your next encoder solution.

Exceptional Value

BEPC's competitive pricing ensures you'll get the best value.

Superior Design

- ✓ First to use Opto-ASIC technology
- ✓ Designers of the original Cube Encoder
- ✓ Creators of the Tru-Trac™ linear encoder solution

Customer Service

When you call BEPC, you'll talk to a live person. Our Customer Service Representatives are available from 8:00 am to 4:30 pm GMT

Quick Delivery

- ✓ Standard delivery in 4 to 6 days
- ✓ Next-day expedite option available on some models

3 Year Warranty

BEPC's 3 Year Warranty is the best in the industry.
(2 years on High Temp Options)

Outstanding Quality

EPC is known for the outstanding quality of our products.

- ✓ ISO 9001 Certified
- ✓ RoHS And WEEE Compliance

World Headquarters

Americas Division

Encoder Products Company
464276 Highway 95
PO Box 249
Sagle, Idaho 83860
USA
Phone: 800-366-5412, 208-263-8541
Fax: 208-263-0541
E-mail: sales@encoder.com
Website: www.encoder.com

Europe Division

British Encoder Products Company
Whitegate Industrial Estate, Unit 33
Wrexham, Clwyd
Wales LL13 8UG
United Kingdom
Phone: +44.1978.262100
Fax: +44.1978.262101
E-mail: sales@encoder.co.uk
Website: www.encoder.co.uk

Asia Division

Zhuhai Precision Encoder Co., LTD
5, Jian Ye 1 Road, 5/F West
Ji Da District
Zhuhai City 519015
People's Republic of China
Phone: +86.756.3363470
Fax: +86.756.3363573
E-mail: EPC-Asia@163.com
Website: www.asiaencoder.com



Visit www.encoder.co.uk to view our full line of outstanding encoders.

For specification assistance
call +44(0)1978 262100
or email sales@encoder.co.uk

