

# TB-537: Quick Start Instructions for Programmable Accu-CoderPro™ Encoders

For complete details, see User Guide included on Field Programming Software USB Flash Drive, also available online at: <http://encoder.co.uk>

## System Requirements for BEPC Field Programming Software:

Operating System: Windows 7, Windows 8/8.1, Windows 10, Processor: 1 GHz or faster, RAM: 1 GB (32-bit) or 2 GB (64-bit)  
HDD Space: 5 GB, Interface: USB 2.0 (or higher), Display Resolution: 800x600 dpi or better

**NOTE:** PR1 Driver from *Accu-CoderPro™ Field Programmer* (see Figure 1) must be installed before connecting encoder and *USB Programming Module* (see Figure 2) to computer.

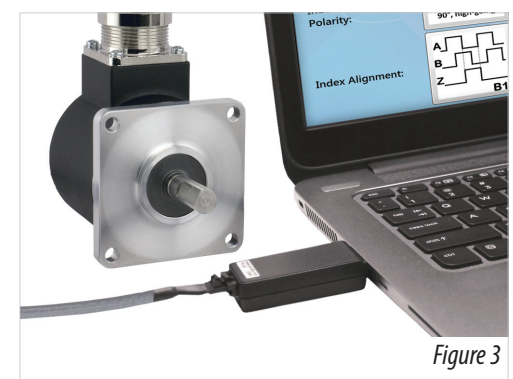


## Administrator privileges are required for installation.

1. Install Field Programming Software
  - a. Insert Field Programmer Installation USB flash drive into available USB port (see Figure 1).
  - b. Navigate to the directory for the USB flash drive and open the appropriate installer folder for your machine (x64 for 64-bit or x86 for 32-bit).
- OR-
- a. Download the Field Programming Software from [www.encoder.co.uk](http://www.encoder.co.uk)
- b. Select the appropriate installer for your machine (64-bit or 32-bit) and save to your local drive.
- c. Unzip the folder.
2. Double-click setup.exe. You will be prompted to enter administrator credentials.  
NOTE: If you right-click on setup.exe, "Run as Administrator" is an option on the pop-up menu. Do not choose this option because the software will not install correctly.
3. Follow the installer prompts to install the USB driver and Field Programming Software. Installer will add desktop icon during installation (see Figure 4).

Note: The installer package may request the installation of Microsoft .NET Framework and Visual C++ Redistributables if they are not already present on your machine.

4. Connect Interface Cable to encoder (see Figure 2).
5. Connect Interface Cable to USB Programming Module (see Figure 2).
6. Insert USB Programming Module into a USB 2.0 or higher port on computer or tablet. (see Figure 3).

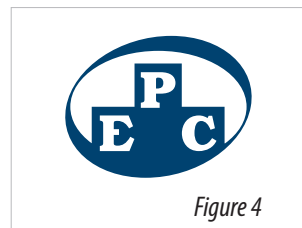


# TB-537: Quick Start Instructions for Programmable Accu-CoderPro™ Encoders

7. Open Field Programming Software by double-clicking desktop icon (see *Figure 4*).
8. Change **New Settings** fields to desired configuration (see *Figure 5*).
9. Click **Program New Settings** to program the encoder (see *Figure 5*).
10. When programming is complete, prompt will appear (see *Figure 6*).
11. Before disconnecting encoder from Interface Cable, choose from the exit options that appear on-screen (see *Figure 6*).

If you are only programming one unit, click **Exit** to close the program.

If you are programming multiple units, select either **Program Another** or **Program Another Same Settings**.



EPC/BEPC Field Programming Software

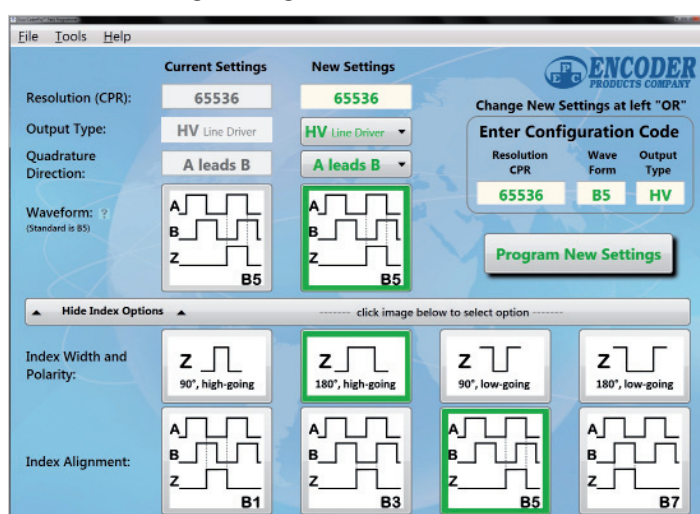


Figure 5

NOTE: Additional blank labels are provided with each encoder. For each encoder, record the new programmed settings on a label *with a permanent marker*. Apply new label on encoder next to factory label.

**DO NOT REMOVE  
original factory label.**

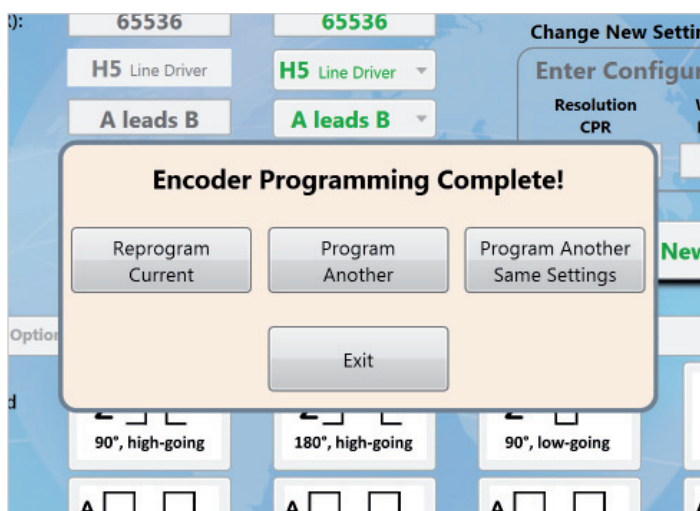


Figure 6