

# Accessories - Measuring Wheels

## Measuring Wheel Application Guide Recommended Use For Measuring Wheels

### Knurled Faced

Coarse Fabric Cloth Tape Rough Wood  
Rubber Carpet Foam  
Insulation

### Rubber Insert

Fine Fabric Paper Cable  
Hard Plastic Film Foil  
Metal (crease-free)

### 80 Urethane Faced

Soft Materials  
Smooth Materials

## Temperature Specifications

### Rubber Faced

-40° F to +275° F

### Urethane Faced

-40° F to +155° F

The above recommendations are only guidelines.  
Performance may vary depending on your application.  
Contact Customer Service for specification assistance.



A Photograph Example of our Wheel Selections

## Features

Measuring wheels are a very cost-effective way to use rotary encoders to measure linear motion such as cut to length applications. Measuring wheels are also useful when it is inconvenient to mount the encoder directly onto the motion device. It is common to have one or two measuring wheels mounted on an encoder shaft. The two most important factors in selecting the best measuring wheel for a given application are the circumference and the surface material. The surface material must be chosen to give optimal traction without unduly compromising wear, while the circumference should be selected to give the best accuracy within the mounting constraints available.

BEPC offers two types of measuring wheels, the first type, Faced Measuring Wheels, has a wide contact surface with a variety of faced coatings (Knurled, Urethane), one of which will be suitable for nearly every specialised application. The second, Rubber Tyre Measuring Wheels uses a replaceable rubber insert or "Tyre" that is easier to set up and maintain and fits most general purpose requirements.

### 6mm Bore

### 10mm Bore

| Wheel Type        | Circumference         | Order Code | Wheel Type        | Circumference         | Order Code |
|-------------------|-----------------------|------------|-------------------|-----------------------|------------|
| Rubber Tyre       | 200mm Circumference   | MWB2RU-06  | Rubber Tyre       | 200mm Circumference   | MWB2RU-10  |
| Rubber Tyre       | 300mm Circumference   | MWB3RU-06  | Rubber Tyre       | 300mm Circumference   | MWB3RU-10  |
| Rubber Tyre       | 400mm Circumference   | MWB4RU-06  | Rubber Tyre       | 400mm Circumference   | MWB4RU-10  |
| Rubber Tyre       | 500mm Circumference   | MWB5RU-06  | Rubber Tyre       | 500mm Circumference   | MWB5RU-10  |
| Rubber Tyre       | 6" Circumference      | MWB06RU-06 | Rubber Tyre       | 6" Circumference      | MWB06RU-10 |
| Rubber Tyre       | 12" Circumference     | MWB12RU-06 | Rubber Tyre       | 12" Circumference     | MWB12RU-10 |
| Rubber Tyre       | 333.3mm Circumference | MWB33RU-06 | Rubber Tyre       | 333.3mm Circumference | MWB33RU-10 |
| Knurled Aluminium | 200mm Circumference   | MWB2KN-06  | Knurled Aluminium | 200mm Circumference   | MWB2KN-10  |
| Knurled Aluminium | 300mm Circumference   | MWB3KN-06  | Knurled Aluminium | 300mm Circumference   | MWB3KN-10  |
| Knurled Aluminium | 400mm Circumference   | MWB4KN-06  | Knurled Aluminium | 400mm Circumference   | MWB4KN-10  |
| Knurled Aluminium | 500mm Circumference   | MWB5KN-06  | Knurled Aluminium | 500mm Circumference   | MWB5KN-10  |
| Knurled Aluminium | 6" Circumference      | MWB06KN-06 | Knurled Aluminium | 6" Circumference      | MWB06KN-10 |
| Knurled Aluminium | 12" Circumference     | MWB12KN-06 | Knurled Aluminium | 12" Circumference     | MWB12KN-10 |
| Knurled Aluminium | 333.3mm Circumference | MWB33KN-06 | Knurled Aluminium | 333.3mm Circumference | MWB33KN-10 |

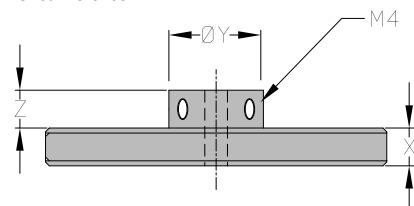
We also stock other sizes & types of wheels, and can customise bore sizes.

Please call the sales office for Price and delivery.

| Urethane Wheels - 0.250" Bore |                     |            |
|-------------------------------|---------------------|------------|
| Wheel Type                    | Circumference       | Order Code |
| 80 Urethane                   | 200mm Circumference | 161399     |
| 80 Urethane                   | 6" Circumference    | 161360     |

## Typical "MWB" Dimensions

BECo "MWB" specification wheels share the following dimensions with the exception of Bore Size and Circumference.



Y = 25mm (All "MWB" Wheels)  
Z = 10mm (400mm & Below), 9mm (500mm)  
X = 10mm (400mm & Below), 20mm (500mm)  
Fixings = 2 X M4 Screws @ 90° Apart

### Urethane Wheels (161399 & 161360)

X = 6.35mm

There is no protruding spigot (Z) on these wheels - 6.35mm is the total width.

For non-standard wheels & other information please contact sales.