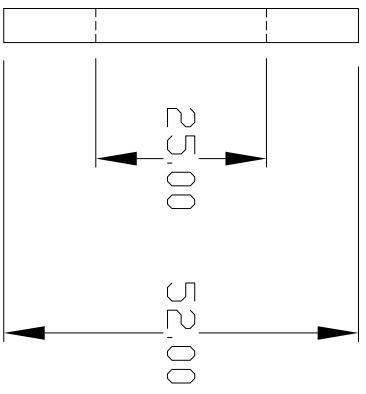
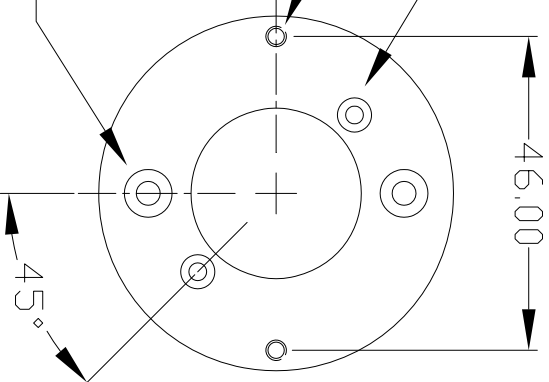


2 Holes $\varnothing 2.60$
 Counterbored 5.00 x 3mm deep
 on a 37.50 PCD

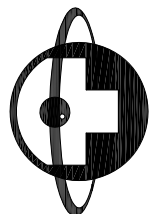
2 Holes
 Tapped M3

2 Holes x $\varnothing 3.50$
 Countersunk 1.75 deep
 on a 37.50 PCD



- REVISION HISTORY -

ISS.	DESCRIPTION OF LATEST REVISION	DATE
-	New Drawing	19-9-17



British Encoder Products
 Unit 33
 Whitegate Industrial Estate
 Wrexham
 LL13 8UG
 Tel: +44 (0)1978 262100
 Fax: +44 (0)1978 262101

Tolerances:
 Linear Dimensions and Hole Centres $\pm 0.05\text{mm}$
 Drilled Hole $\varnothing +0\text{mm} +0.16\text{mm}$
 6.3 Micrometre Finish On Machined Surfaces
 Break All Sharp Edges
 Geometric Tolerance To B.S.308 Part 3

Drawn By: Lee Edwards	Original Date: 21-7-05
Checked By 1: P.Telre	Issued Date: 21-7-05
Checked By 2: D.Breese	Modified By: XXXXXXXXXX

Drawing NO.: **M-9 Parvex Flange for 755HS** Full Project Name: **A4** Third Angle Projection